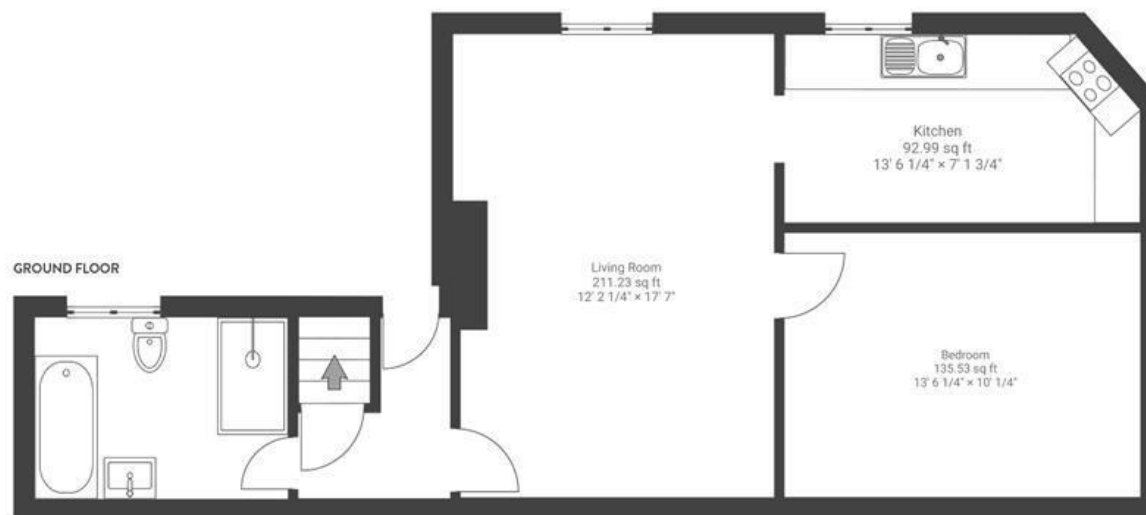


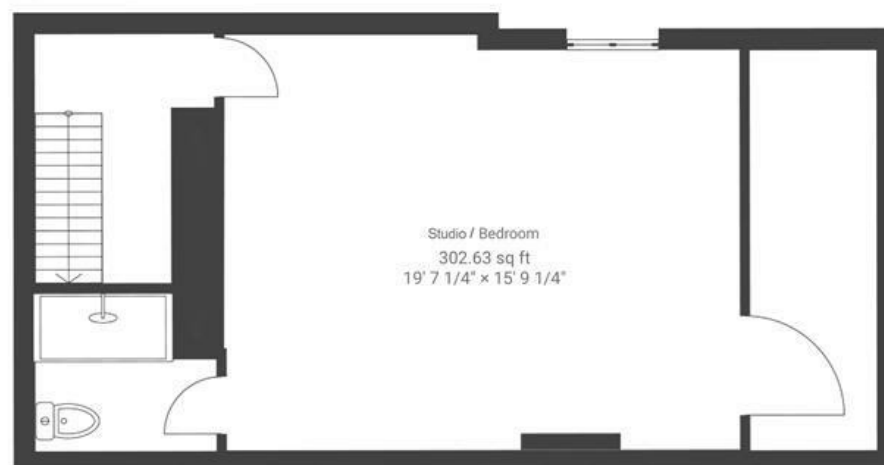
# The Nursery

## BEDMINSTER

APPROXIMATE FLOOR AREA  
93.65 SQM / 1008 SQFT



LOWER GROUND FLOOR



**Boardwalk**

# The Nursery

BEDMINSTER, BRISTOL

£

£320,000

zzz

2 Bedrooms



BS3 3EB



2 Bathrooms

*It's a great place to live being so close to North Street. We have lots of green spaces near us and are a close walk to the Harbourside and Ashton Court. The basement space we built is amazing for both a second bedroom and also a professional working space/studio, which I've got a lot of use out of.'*

